

# West Area Planning Committee Presentation

[www.oxford.gov.uk](http://www.oxford.gov.uk)



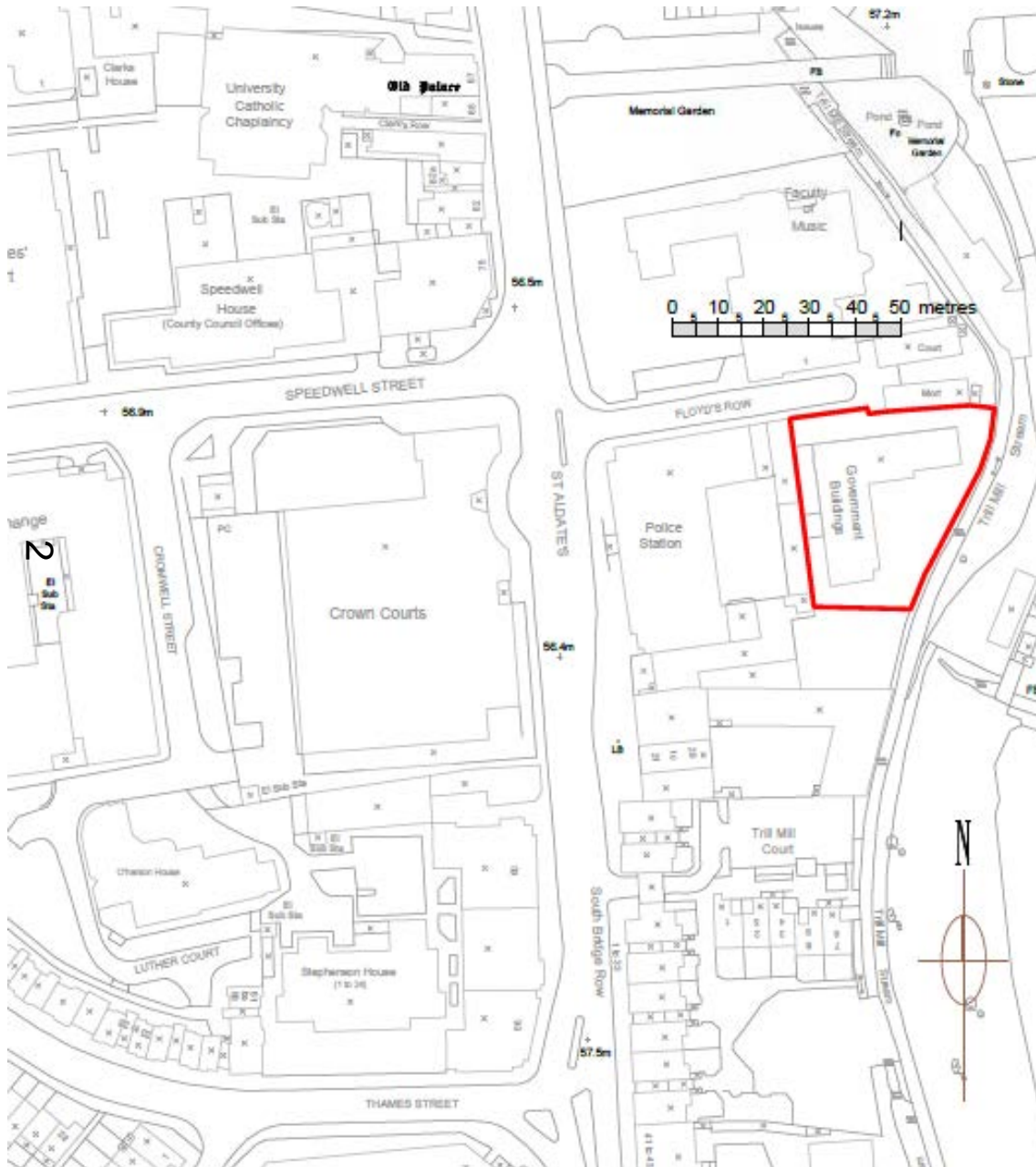
**18/01856/CT3**

1

**Government Building  
Floyds Road  
Oxford**



# Site location plan



[www.oxford.gov.uk](http://www.oxford.gov.uk)



## Views of the site (front, access and side)



[www.oxford.gov.uk](http://www.oxford.gov.uk)





## Views of the site (side and rear)



[www.oxford.gov.uk](http://www.oxford.gov.uk)



# Existing ground floor level





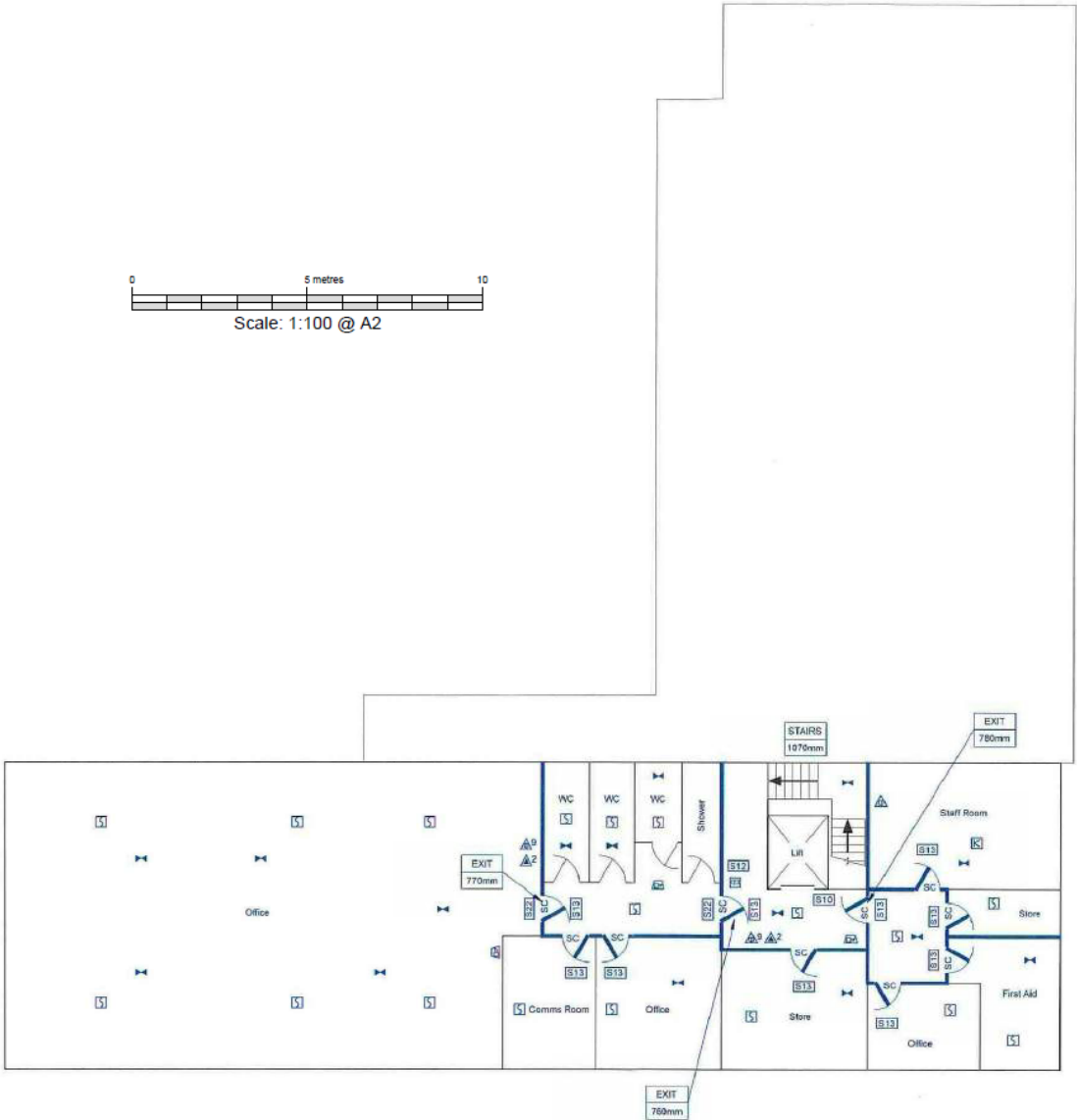
## 9

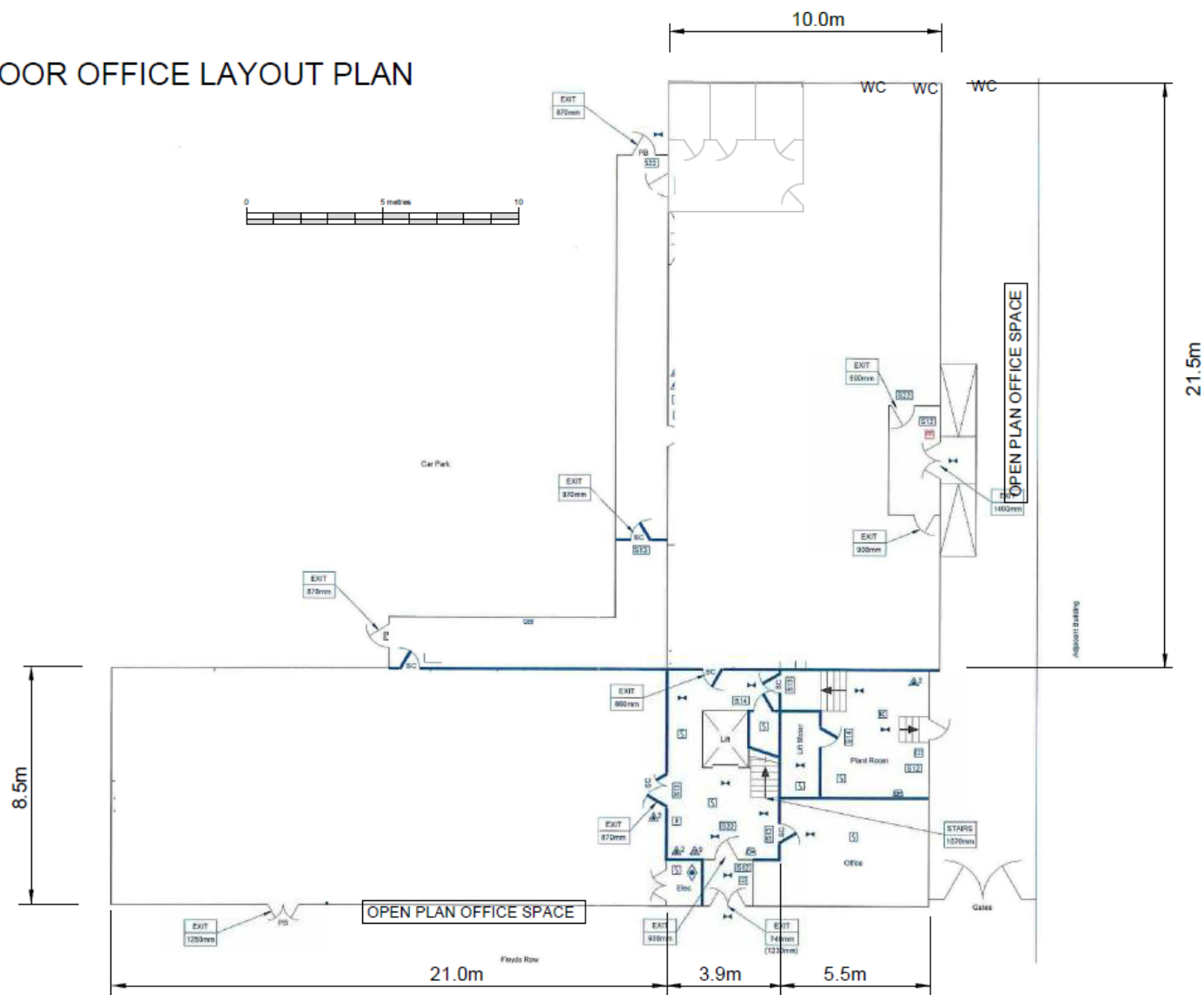


# Existing first floor plan



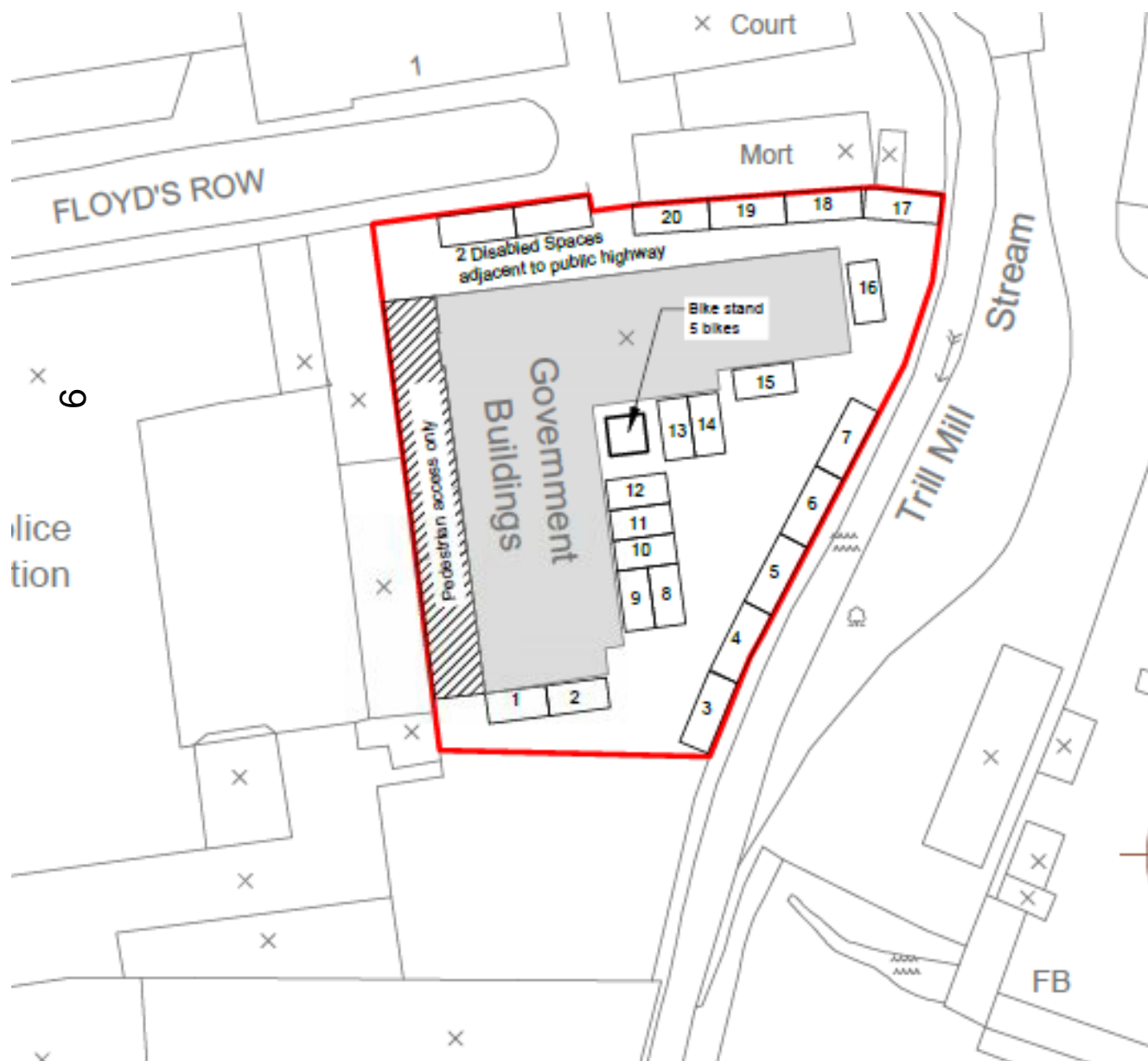
7







# Proposed car parking and cycle storage



[www.oxford.gov.uk](http://www.oxford.gov.uk)



This page is intentionally left blank

# West Area Planning Committee Presentation

[www.oxford.gov.uk](http://www.oxford.gov.uk)



**18/02031/FUL**

11

**12 Earl Street  
Oxford  
OX2 0JA**





The map shows a residential area in Botley, Oxford. Key streets include Earl Street, Duke Street, Marlborough Court, and Lamarsh Road. A site is highlighted with a blue hatched pattern on Earl Street, between Duke Street and Lamarsh Road. The map also shows a retail park, a substation, and a bus stop. Dimensions and distances are marked along the streets.



## View of rear of site

13



[www.oxford.gov.uk](http://www.oxford.gov.uk)





## View of 13 Earl Street and boundary

14



[www.oxford.gov.uk](http://www.oxford.gov.uk)





# View of 11 Earl Street

15



[www.oxford.gov.uk](http://www.oxford.gov.uk)





# View of 11 Earl Street

16

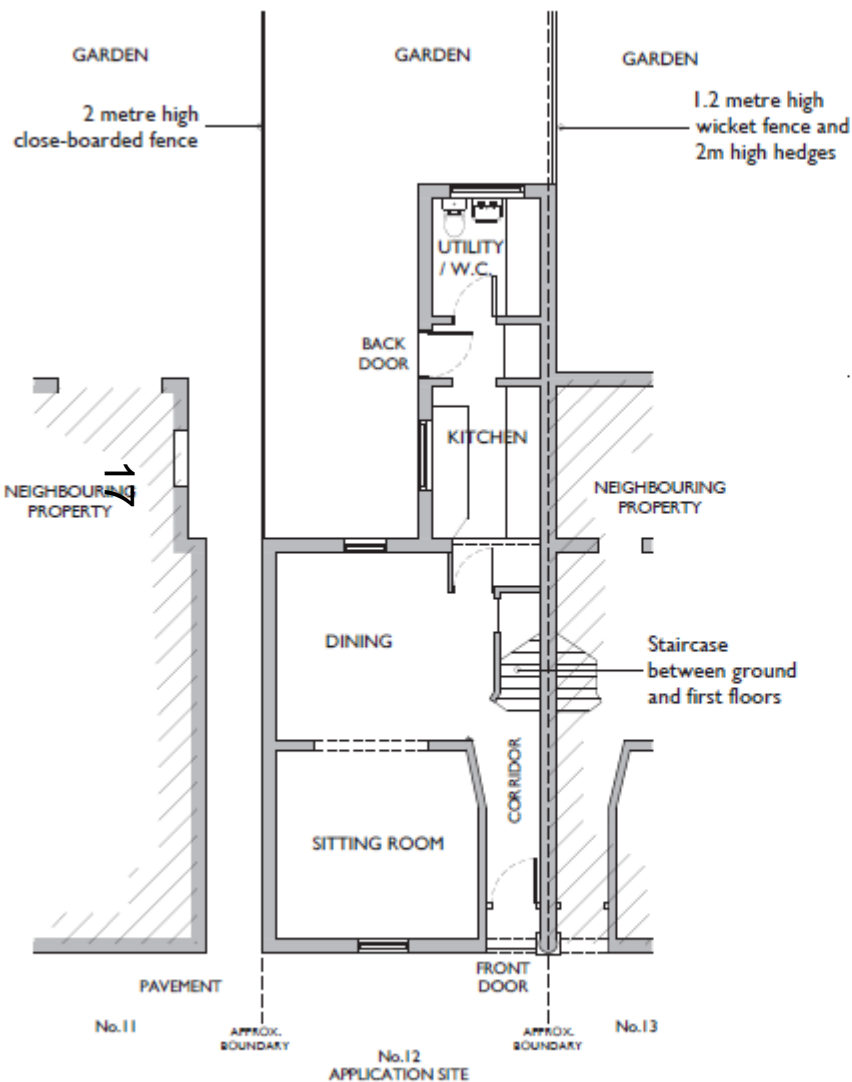


[www.oxford.gov.uk](http://www.oxford.gov.uk)

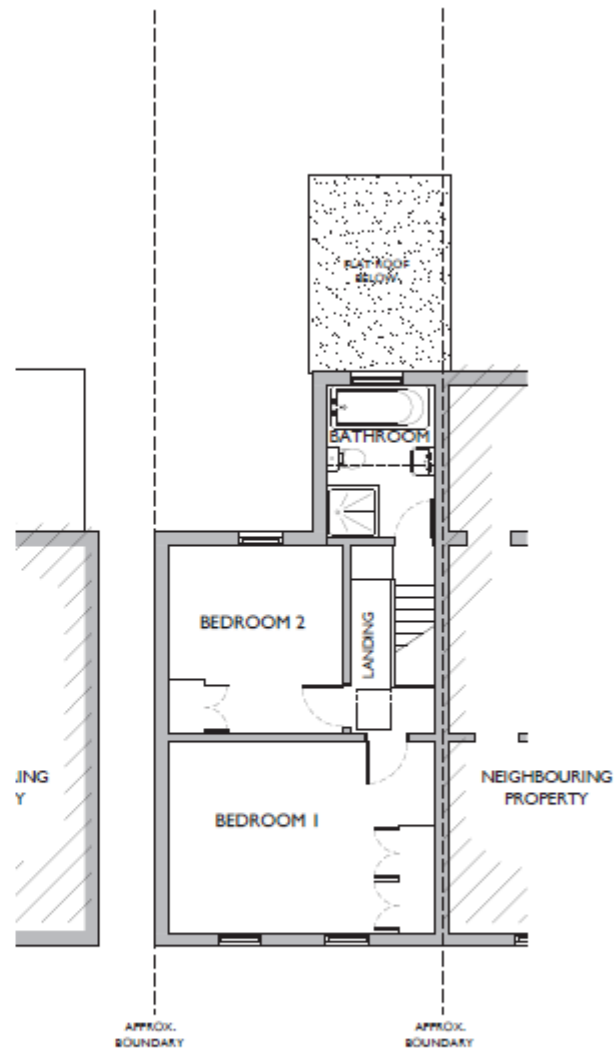


# Existing Floor Plans

[www.oxford.gov.uk](http://www.oxford.gov.uk)



GROUND FLOOR

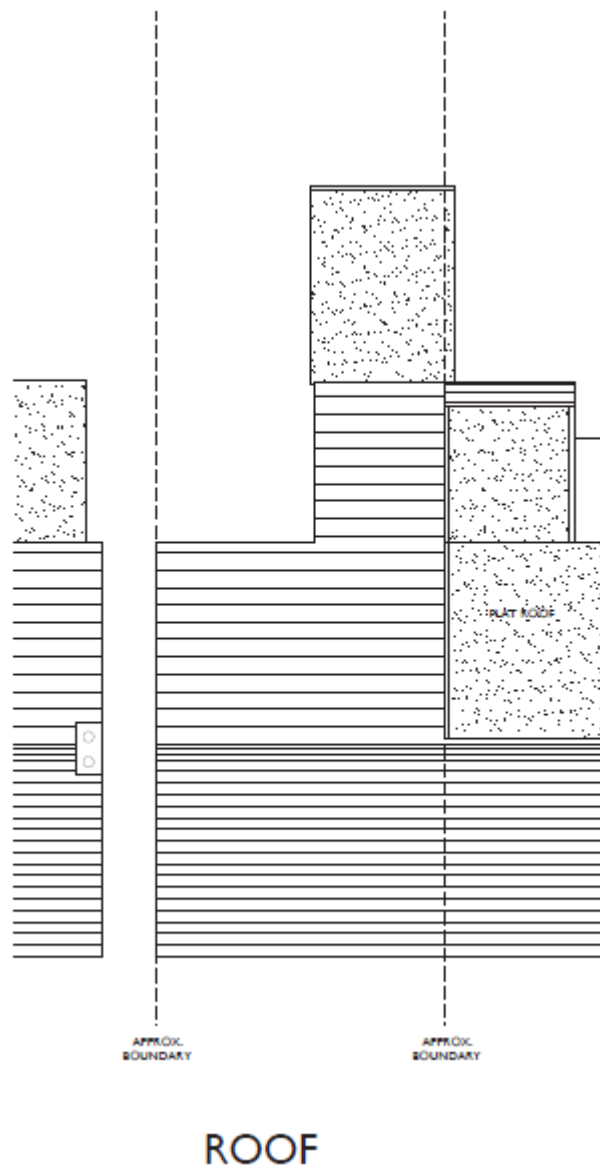


FIRST FLOOR



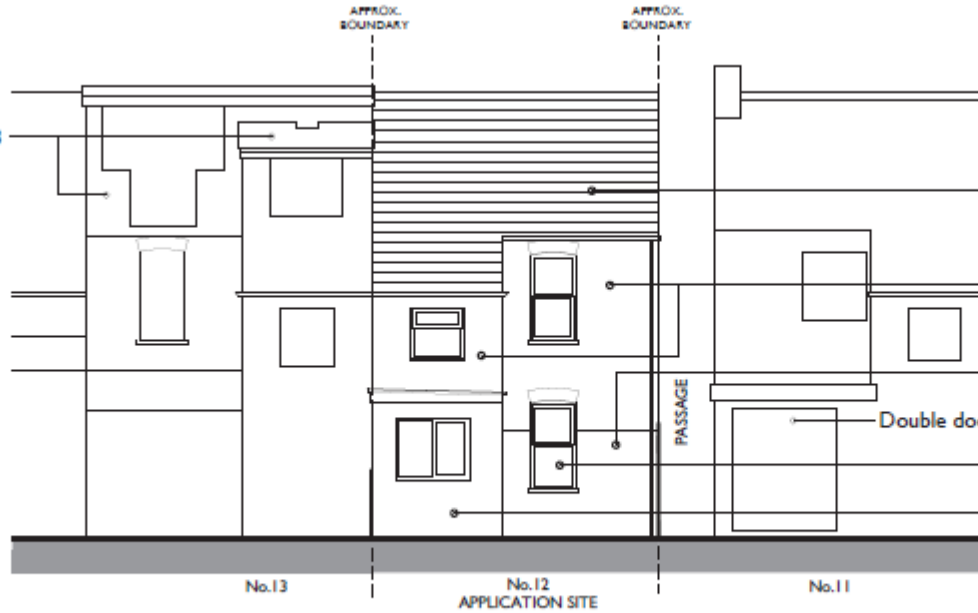


# Existing Roof Plan



# Existing Elevations

Dormer extensions of No.13



## MATERIALS

- Natural slate pitched roof
- Red blend clay facing brick walls
- Off-white painted rendered area
- Double doors
- White uPVC double-glazed windows
- Later extension of matching materials

EAST (GARDEN) ELEVATION

Dormer extension of No.13

INDICATIVE SECTION  
THROUGH No.13

BACK GARDEN

PASSAGE

EARL STREET

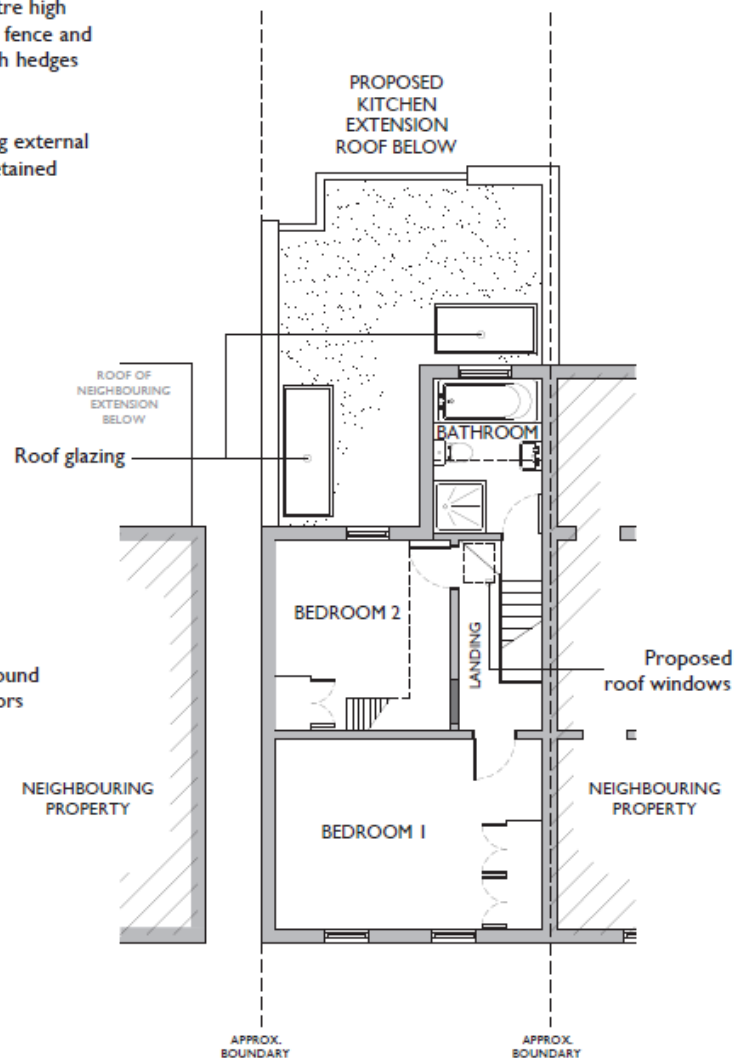
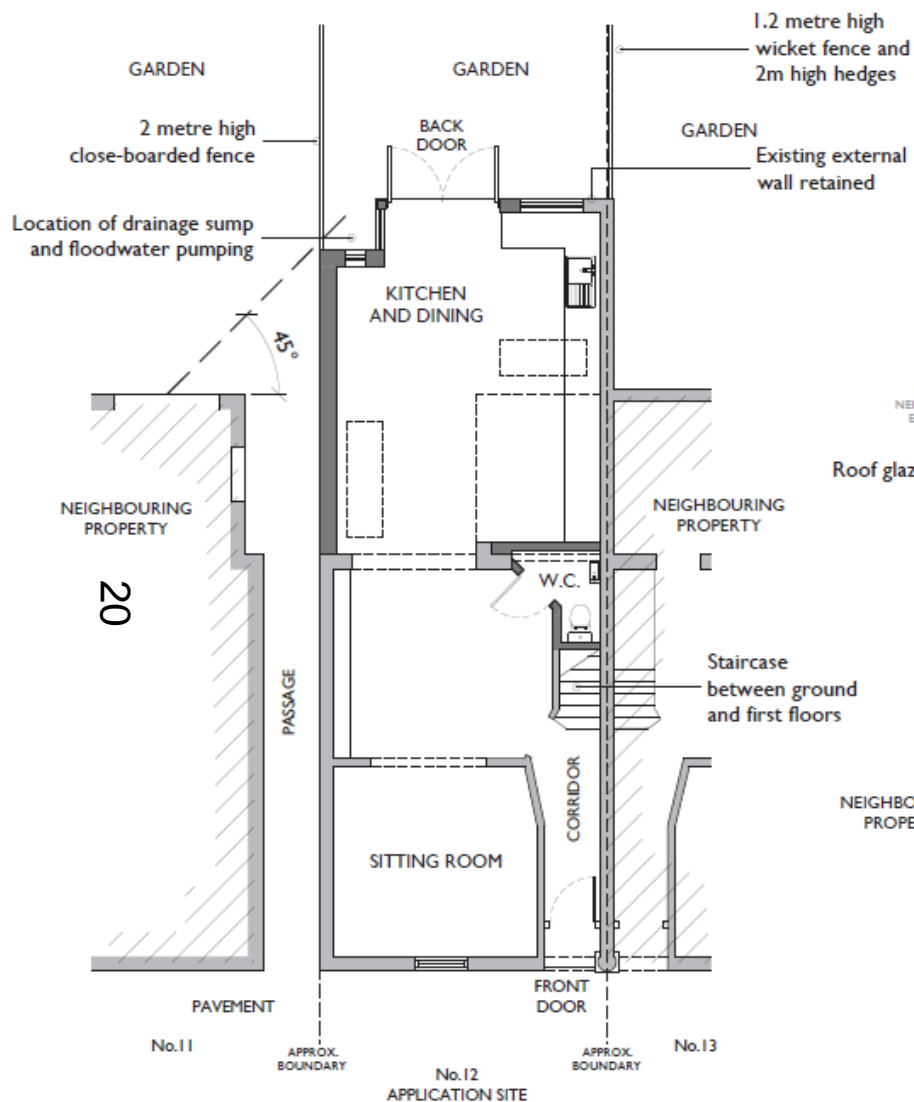
EARL STREET

SOUTH ELEVATION

NORTH ELEVATION

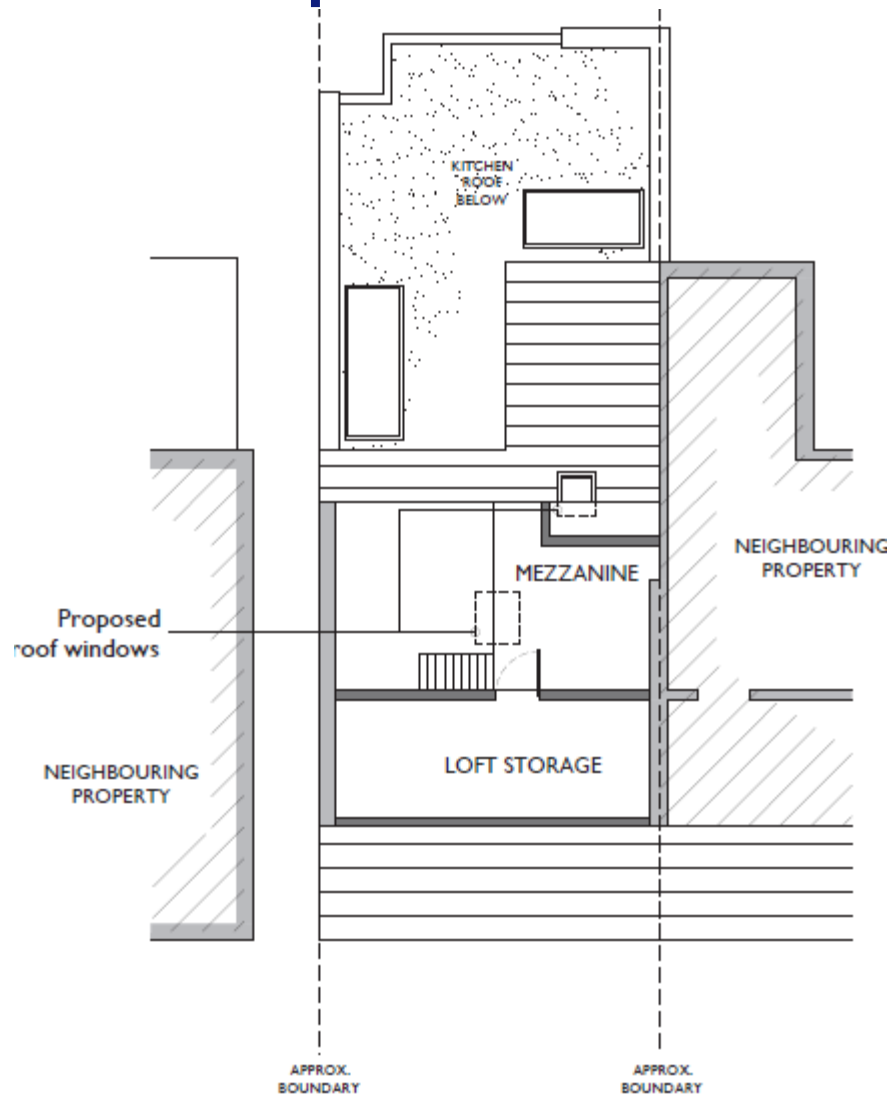
# Proposed Floor Plans

[www.oxford.gov.uk](http://www.oxford.gov.uk)





# Proposed Floor Plans



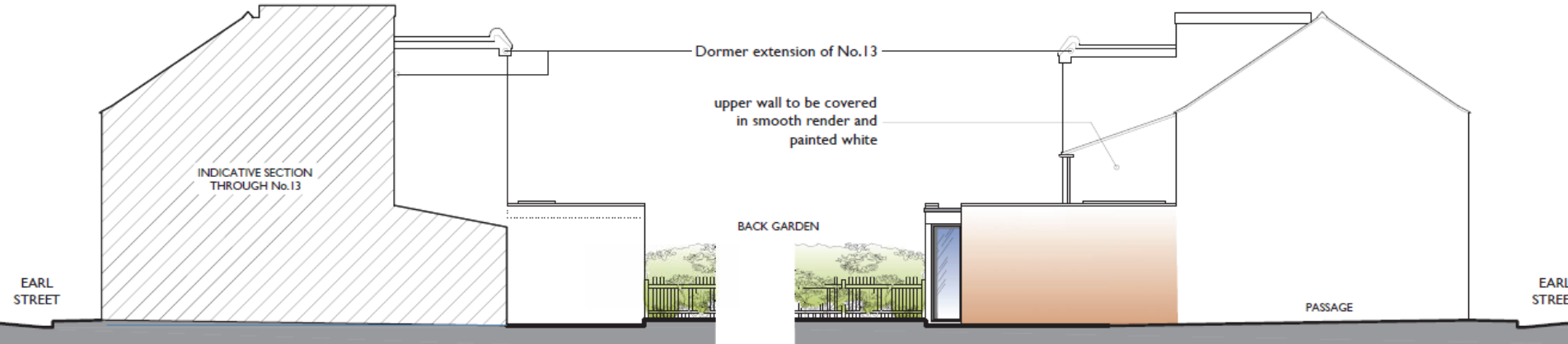
LOFT CONVERSION



# Proposed Elevations



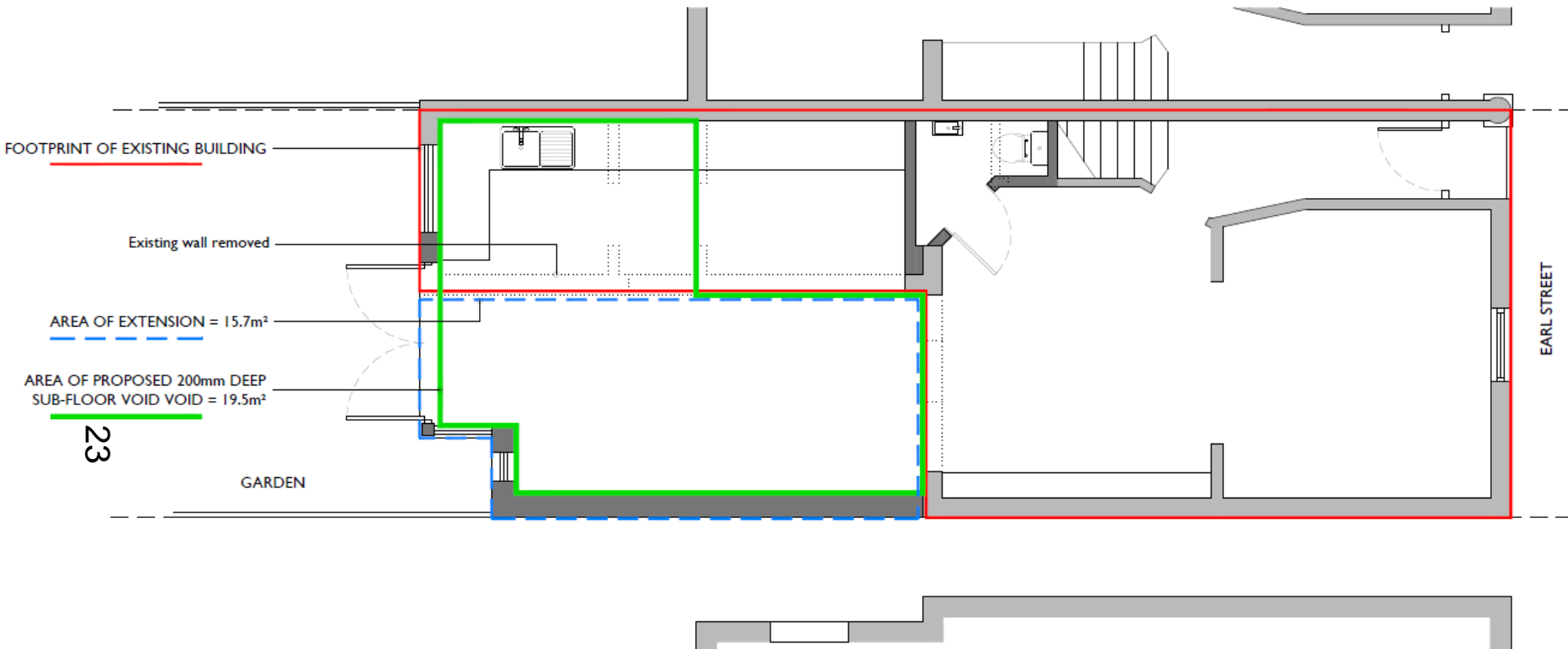
EAST (GARDEN) ELEVATION



SOUTH ELEVATION

NORTH ELEVATION

# Proposed Flood Voids





This page is intentionally left blank